

# MAXTHERM BOILERS

**SOLID FUEL VERTICAL HIGH EFFICIENCY THERMAL OIL HEATER**



**DESIGN FEATURES:**

- Designed as per DIN 4754.
- Vertical Furnace design with multiple installation options.
- Designed for efficient combustion of low grade fuel.
- Three pass design
- Designed for maximum & consistent efficiency

**FUEL FIRING OPTIONS**

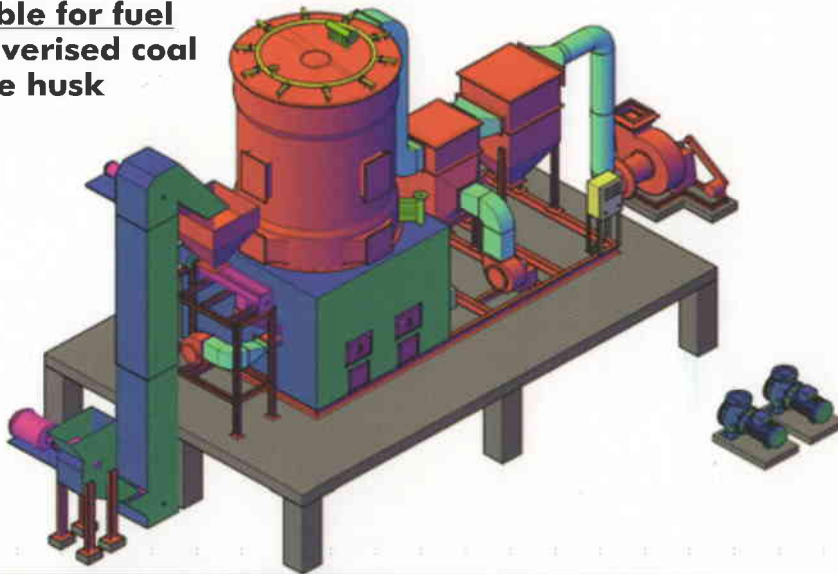
**FIXED GRATE**

Fixed grate system were for many years the most common devices for combustion of biomass. In its simplest form, a fixed grate system consists of a grate in combustion room (thereby forming the furnace). Primary air, for the combustion is supplied under the grate. Secondary air, for combustion of the volatile gases themselves, is supplied above the grate. Typical combustion temperatures in fixed-grate systems range from 850 to 1,400 C. Traditionally, ash is removed manually from fixed-bed systems, although automatic ash removal systems are available on request.



**Suitable for fuel**  
**wood logs / Wood chips / Coal**

**Suitable for fuel**  
**1. Pulverised coal**  
**2. Rice husk**



**Bubbling / Fluidized Bed**

BFB Boilers are designed with a high degree of flexibility to facilitate air movement between the bubbling bed and the overfire air system, efficient combustion by adjustment of fuel delivery to the bed. This operational flexibility allows owners to burn cheaper opportunity fuels and control fuel costs.

**Suitable for fuel**  
**Wood chips / Coal / Palm cell / Palm kernel / Wood pellets**

**Flake type chain grate stoker**

Flake type chain grate stoker is a new style travelling grate. It features easier to maintain and repairing (No need stop boiler to replace broken grate bars), also reduce the leak of coal from the grate stoker surface. Its performance and operation is constant and reliable. More and more clients prefer this type chain grate because of its good structure.





**EXPANSION TANK**



**THERMIC FLUID OIL PUMP**



**OUR GALLERY**

**Oil Fired Thermic Fired Heater  
(Mono Block Burner)**



**Oil Fired Thermic Fired Heater  
(Duo Block Burner)**



**Radiant Coil**



**Convective Coil**



**Skid System**

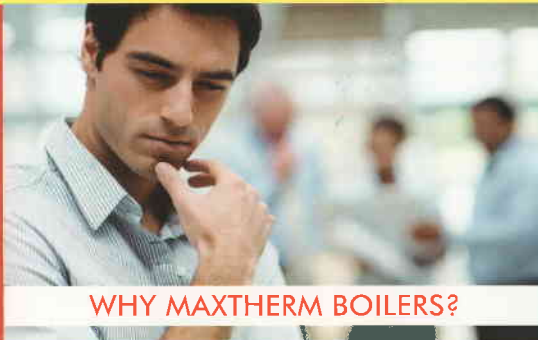


**Firing in FBCTH**



## TECHNICAL SPECIFICATION

Description	Unit	MPWS-02	MPWS-04	MPWS-06	MPWS-08	MPWS-10	MPWS-15	MPWS-20	MPWS-25	MPWS-30
Rated Output	Kcal/hr	200000	400000	600000	800000	1000000	1500000	2000000	2500000	3000000
Outlet Temp	Deg-C	300	300	300	300	300	300	300	300	300
Flow	m3/hr	14	28	36	48	60	110	120	180	250
Fuel					Husk / Wood / Coal					
On Husk / Wood	%					72%				
On Husk / Wood	%					72%				
Husk / Wood	Kgs/Hr.	84	168	253	337	421	631	842	1052	1263
Coal	Kgs/Hr.	58	117	175	234	292	439	585	731	877
Tube Size	mm	31.8	50.8	50.8	50.8	50.8	63.5	63.5	76.2	76.2
No.of.Start	Nos	2	2	3	3	4	4	6	6	6
Inlet/Outlet Header Size	NB	80	80	100	100	100	150	150	200	200
Expansion Tank Capacity	Litres	500	500	750	750	1000	1500	2000	2500	3000
Heater	m2	28	43	69	88	99	120	155	195	225
Air Pre Heater	m2	7	12	12	20	20	35	40	50	50
GreatArea	m2	0.64	1.22	1.32	1.82	2.4	3.42	4.7	5.67	6.25
MDC Cones	Nos	2	4	6	6	6	9	9	12	12
Recommended Stack Dia	mm	350	350	450	450	450	500	600	750	800
Circulation Pump	HP	7.5	10	15	15	20	25	40	50	60
ID Fan	HP	3	5	7.5	15	15	20	20	30	40
FD Fan	HP	1.5	2	3	5	5	7.5	10	12.5	15
Total Connected Load	HP	12	17	25.5	35	40	52.5	70	92.5	115
Electrical Supply										
GCV of Husk / Wood - 300 Kcal/kgs GCV of Coal - 4500 Kcal/kgs										
Description	Unit	MPWS-02	MPWS-04	MPWS-06	MPWS-08	MPWS-10	MPWS-15	MPWS-20	MPWS-25	MPWS-30
Breadth	mm	1500	2000	2080	2300	2600	2700	2970	3300	3300
Length (B) - with MDC	mm	5000	5500	5500	6200	6700	7700	8800	8800	9800
- without MDC	mm	4000	4000	5500	6200	6700	7300	6800	6600	9800
Height (C)	mm	3700	4300	4900	5600	5300	5600	5800	6500	7800
Furnace	mm	1535	1600	1800	2000	2000	2000	2000	2000	2000
Thermic Heater	mm	2200	2500	2770	3380	2860	3430	3700	4500	5000
DP/ Weight	Tops	5	6	7	8	10	12	15	18	22



**WHY MAXTHERM BOILERS?**

### What makes Maxtherm Boilers your Preferred Choice!

- > T T T - Trust, Transparency, Trustworthy
- > Products offered are High Standard Design and hence does not change with Price.
- > We offer overall System Design from concept to commissioning
- > Comprehensive service packages ensure absolute peace of mind
- > One stop shop for all energy needs.
- > Flexible & Proactive approach.
- > Customised design as per client needs.
- > Ensure Trust by delivery



## Maxtherm Boilers Pvt Ltd

32/12, T.S. Krishna Nagar,

Anna Nagar West Extn., Chennai - 600 050. Tamil Nadu, India.

Ph: 044 - 4380 6882/84/ 8939812821

Email: sales@maxthermboilers.com    Web: www.maxthermboilers.com